



M. B. Products Research Distributing Inc.

Document No.: ICF/PCP/PSS-

Product Specification Sheet

Version No.: 1

Product Name: **Raw Frozen Pre-dusted Squid Rings and tentacles (40-60), IQF 20 x 1 Lb**

Brand: **Ocean Harvest**

Category: \_\_\_\_\_

Item No: **SQDPD0001**

Common Name: **Raw Frozen Pre-dusted Squid Rings and tentacles**

SCC: \_\_\_\_\_

Scientific Name: ***Loligo duvaucelii***

Case pack: **Packed in Plain Poly bag and Put in Master Carton**

Form: **FAO 57**

Net Case Wt: **9.07 Kg/20 Lb.**

Processing: **I.Q.F.**

Product of: **Thailand**

## PRODUCT / LABEL INFORMATION

### A) PRODUCT DESCRIPTION

Temperature - 18 °C or Lower. Safety information physical, chemical and microbiological (Ref. Department of fisheries and customer standards)

### B) SENSORY/ORGANOLEPTIC

Appearance: **Frozen Condition Good**

Texture: **Natural Firm**

Odor: **Normal**

Flavor: **Normal**

Color: **White-Light Yellow Colour**

### INGREDIENT STATEMENT

## ANALYTICAL PARAMETERS FOR FINISHED PRODUCT

### A) MICROBIOLOGICAL

Tests must be conducted according to AOAC or FDA BAM

**Maximum Tolerance**

|                        |              |
|------------------------|--------------|
| TPC                    | -            |
| Coliforms              | -            |
| <i>E. coli</i>         | < 4 MPN/g    |
| <i>Salmonella spp.</i> | ND /125 g    |
| <i>S. aureus</i>       | < 1000 MPN/g |

(Add or replace parameters as per the product under consideration)

**B) APPEARANCE/DEFECTS**

| Parameters     | Target                     | Tolerance                    |
|----------------|----------------------------|------------------------------|
| Dehydration    | None                       | None                         |
| Broken         | 10 % by Weight or by count | ≤ 15 % by Weight or by count |
| Foreign matter | Not found                  | Not found                    |
|                |                            |                              |
|                |                            |                              |
|                |                            |                              |
|                |                            |                              |

**C) CHEMICAL ANALYSIS**

| Parameters | Target  | Sensitivity Method  |
|------------|---------|---|
| Mercury    | 0.3 PPM | In-house method SOP LBCH-07474 based on USEPA, February 2007, Method 7473, Mercury Analyzer |
| Cadmium    | 1.0 PPM | In-house method SOP No.LBCH-04408 based on AOAC(2019) 999.10,                               |
| Lead       | 0.3 PPM | In-house method SOP No.LBCH-04408 based on AOAC(2019) 999.10,                               |

**D) NUTRITION VALUE**

Serving Size:

| Components     | Amount | %Daily Value |
|----------------|--------|--------------|
| Calories       | 70     |              |
| Fat            | 7 g    | 11%          |
| Saturated fats | 0 g    | 0%           |
| Trans fats     | 0 g    |              |
| Cholesterol    | 130 mg | 43%          |
| Sodium         | 550 mg | 23%          |
| Carbohydrates  | 17 g   | 6%           |
| Fiber          | 1 g    | 4%           |

|           |      |    |
|-----------|------|----|
| Sugar     | 0 g  |    |
| Protein   | 11 g |    |
|           |      |    |
| Vitamin A |      | 0% |
| Vitamin C |      | 0% |
| Calcium   |      | 2% |
| Iron      |      | 4% |

## MANUFACTURING

### A) RAW MATERIAL

Squid : Raw materials from the catch zone located in the Approved list  
 Pre-dust : Ingredient substance must be safely consumed for consumer

### C) PROCESS AND PRODUCT ASSEMBLY

\*Temp. of start process(after defrost): Not defrost

\*\*Temp. of in process: Target  $\leq 10^{\circ} \text{C}$

### D) FINISHED PRODUCT MEASURABLES

| Target           | Range Min | Range Max | Length | Width | thickness |
|------------------|-----------|-----------|--------|-------|-----------|
| Portion Weight * |           |           |        |       |           |
| Portion Weight * |           |           |        |       |           |

**Product pictures :** Rings made from Squid tube 40/60 cut into 3 pc, tip on



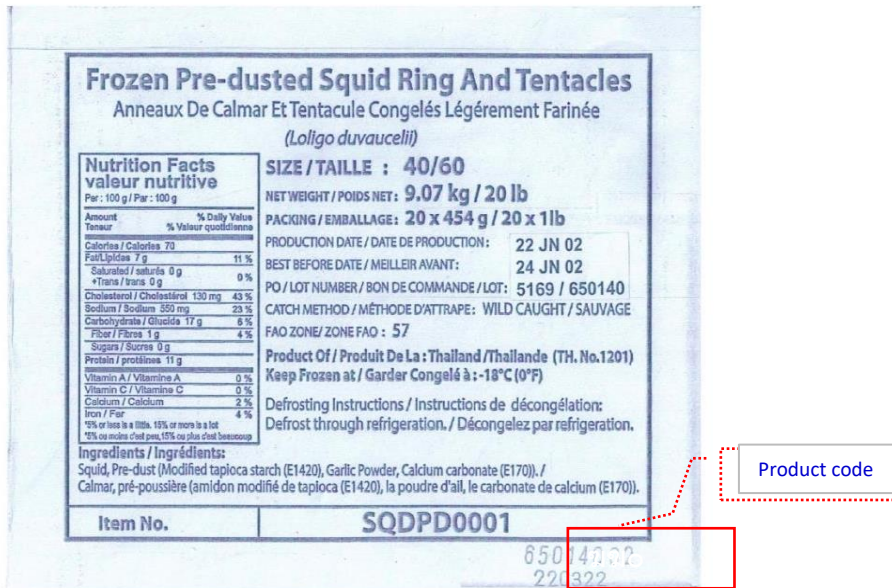
## QUALITY CONTROL

### D) SHELF LIFE / PRODUCTION DATECODE

**Total shelf life from day of production:** 24 Months

**Required storage:** - 18 °C or Lower in Storage room

**Coding policy (location, method, layout):** Bottom right corner  
On label



## PACKAGING

### A) PACKING INSTRUCTIONS

**Primary Packaging:** LDPE Plastic

**Secondary Packaging:** Cardbord

**Label and Adhesive used - Label :** Art Cards, **Adhesive :** Polypropylene

### B) INNER PACKAGING

**Project No:** **Primary Packaging:** Plastic bag

Dimensions: Length 32 cm, Width 21.5 cm, Thickness 1.80 mm

### C) OUTER PACKAGING

Project No: **Secondary Packaging: Master carton**

Dimensions: Length 32 cm, Width 21.5 cm, Height

#### **Tape closure**

Dimensions: Width 2 Inch Thickness 0.30 mm

#### **Adhesive Label: Inner Packaging**

Dimensions: Length 21.0 cm, Width 5.5 cm

#### **Label Pictures**



\*Include more information wherever necessary and as per the product under consideration for the entire specification sheet